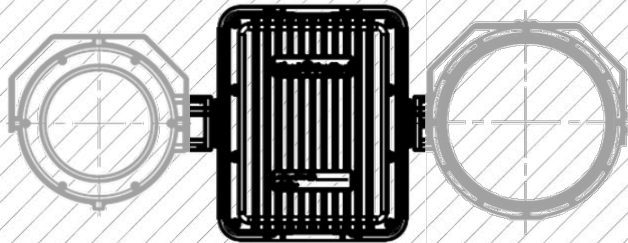


JAEGAR
PTU



JAEGAR HIGH POWERED PTU (PAN & TILT UNIT)

Part Number	JPT-MK2-I36080W
Pan Range; Velocity	360° Continuous; 0.002° - 100.0° per second
Tilt Range; Velocity	-90° to +90°; 0.002° - 100.0° per second
Accuracy	0.0002° / 0.0035 mRad
Repeatability	0.0002° / 0.0035 mRad
Actuation	Custom stepper motors
Speed Control	Zoom dependant speed control (subject to payload)

TELEMETRY

Presets	127x Preset positions, 16x preset tours
Protocols	Pelco D, Pelco D Extended, ONVIF Profile-S
Interface	RS485, ONVIF Profile-S, Serial <> IP
Positioning	Absolute positioning feedback

PHYSICAL CHARACTERISTICS

Input Voltage	Nominal 48VDC (36-72VDC)
Power Consumption	Typical: 53W, peak: 170W (excluding payloads)
Housing Material	Anodised aluminium, white powder marine grade paint finish (other colours are available upon request)
PTU Weight (Typical)	28kg / 61.8lb (excluding mounts, through shaft and payloads, payload capacity 50kg)
PTU Size (Typical)	H434 x W343x D343mm (excluding mounts, through shaft and payloads)
Optional Aux Payload Connectors	QTY4x External connectors allowing for a selection of the following: Power outputs -12vDC, 6A / 24vDC, 15A / 48vDC, 10A Network output – Cat5e, 10/100 Base T Antenna connections – cellular, GPS, Wi-Fi, IP Radio, GPS Compass

INTERFACES

Ethernet	Command and control of all functions including streaming of H.264 video
RS485	Command and control of all functions and firmware upgrade

ENVIRONMENTAL

IP Rating	IP67
Temperature Range	-30°C (-22°F) up to 65°C (149°F) (-40°C with optional heater)

JAEGAR STANDARD PTU (PAN & TILT UNIT)

Part Number	JPT-MK2-I36045W
Pan Range; Velocity	360° Continuous; 0.02° - 45.0° per second
Tilt Range; Velocity	-90° to +90°; 0.02° - 45.0° per second
Accuracy	0.002° / 0.035 mRad
Repeatability	0.002° / 0.035 mRad
Actuation	Custom stepper motors
Speed Control	Zoom dependant speed control (subject to payload)

TELEMETRY

Presets	127x Preset positions, 16x preset tours
Protocols	Pelco D, Pelco D Extended, ONVIF Profile-S
Interface	RS485, ONVIF Profile-S, Serial <> IP
Positioning	Absolute positioning feedback

PHYSICAL CHARACTERISTICS

Input Voltage	Nominal 48VDC (36-72VDC)
Power Consumption	Typical: 53W, peak: 170W (excluding payloads)
Housing Material	Anodised aluminium, white powder marine grade paint finish (other colours are available upon request)
PTU Weight (Typical)	20kg / 44.1lb (excluding mounts, through shaft and payloads, payload capacity 30kg)
PTU Size (Typical)	H434 x W343 x D245mm (excluding mounts, through shaft and payloads)

INTERFACES

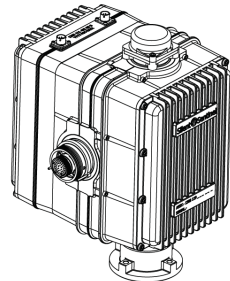
Ethernet	Command and control of all functions including streaming of H.264 video
RS485	Command and control of all functions and firmware upgrade

ENVIRONMENTAL

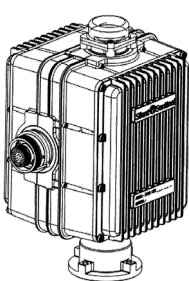
IP Rating	IP67
Temperature Range	-30°C (-22°F) up to 65°C (149°F) (-40°C with optional heater)

TYPICAL JAEGAR PTU*

Jaegar Mk2 High Powered PTU Platform

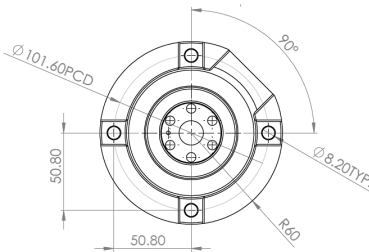


Jaegar Mk2 Standard PTU Platform



* Illustrations are indicative and subject to the final configuration/model.

Jaegar PT Platform Mounting Pedestal



PART NUMBERS

JPT-MK2-I36080W	Jaegar Mk2 PTU, IP, white colour
JPT-MK2-I36045W	Jaegar Mk2 PTU, IP, standard power version, white colour

